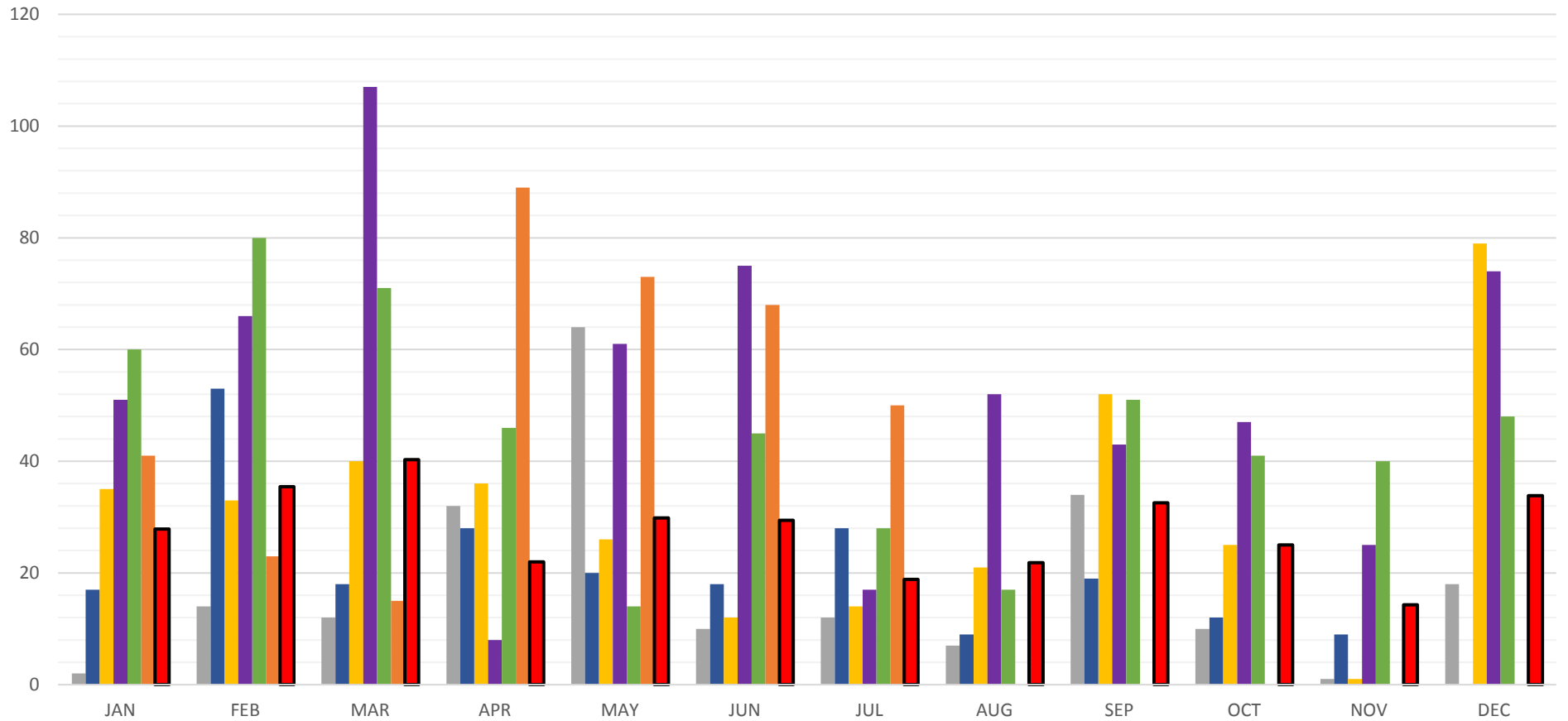
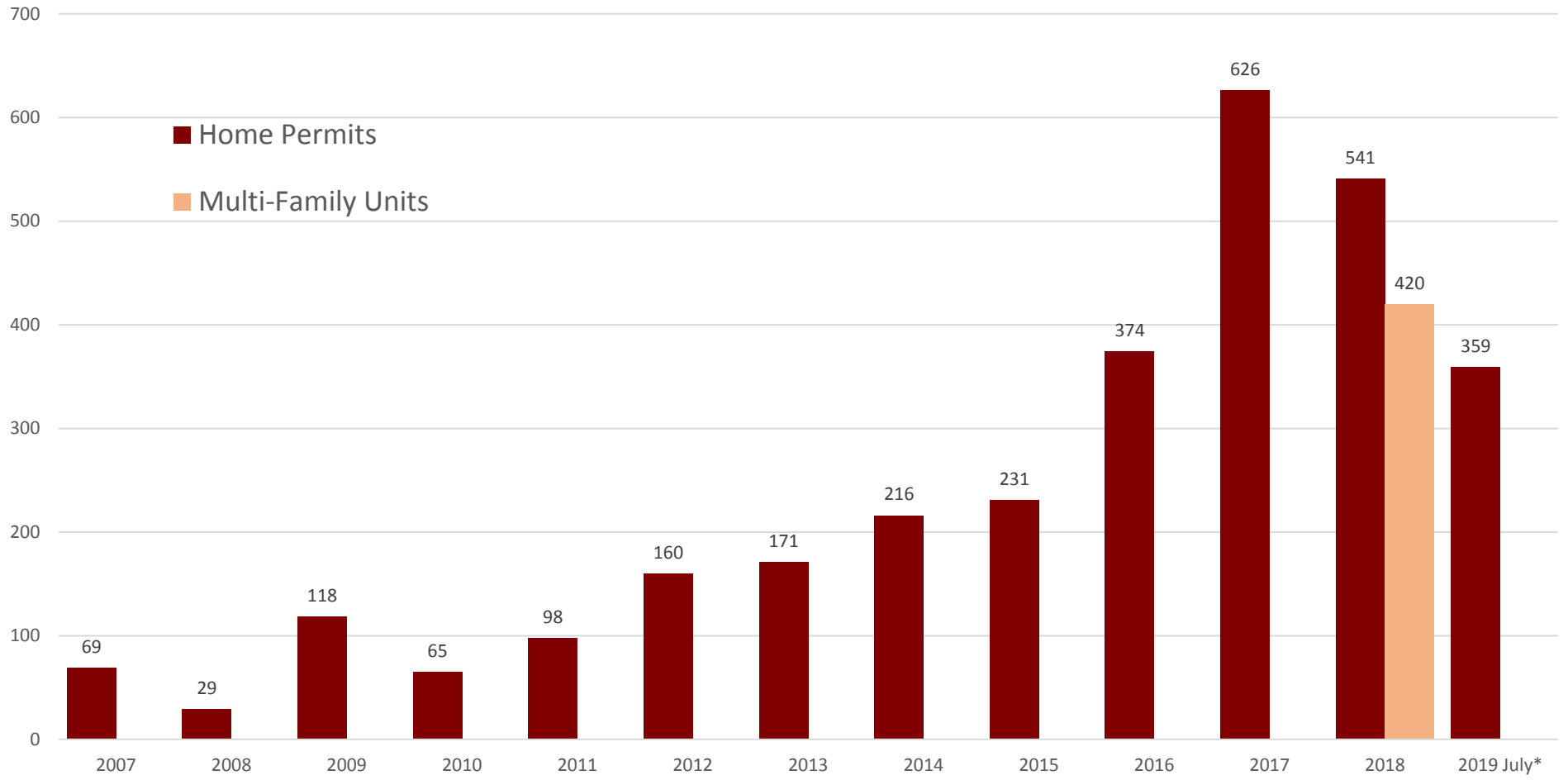


New Home Permits by Month

■ 2014 ■ 2015 ■ 2016 ■ 2017 ■ 2018 ■ 2019 ■ 2012 - 2018 Average



New Home and Multi-Family Permits Issued by Calendar Year 2007 - 2019



2012 - 2018	AVG RBDs
JAN	28
FEB	35
MAR	40
APR	22
MAY	30
JUN	29
JUL	19
AUG	22
SEP	33
OCT	25
NOV	14
DEC	34
TOTAL	331

2013	RBDs
JAN	29
FEB	1
MAR	27
APR	0
MAY	24
JUN	19
JUL	7
AUG	28
SEP	6
OCT	3
NOV	12
DEC	15
TOTAL	171

2014	RBDs
JAN	2
FEB	14
MAR	12
APR	32
MAY	64
JUN	10
JUL	12
AUG	7
SEP	34
OCT	10
NOV	1
DEC	18
TOTAL	216

2015	RBDs
JAN	17
FEB	53
MAR	18
APR	28
MAY	20
JUN	18
JUL	28
AUG	9
SEP	19
OCT	12
NOV	9
DEC	0
TOTAL	231

2016	RBDs
JAN	35
FEB	33
MAR	40
APR	36
MAY	26
JUN	12
JUL	14
AUG	21
SEP	52
OCT	25
NOV	1
DEC	79
TOTAL	374

2017	RBDs
JAN	51
FEB	66
MAR	107
APR	8
MAY	61
JUN	75
JUL	17
AUG	52
SEP	43
OCT	47
NOV	25
DEC	74
TOTAL	626

2018	RBDs
JAN	60
FEB	80
MAR	71
APR	46
MAY	14
JUN	45
JUL	28
AUG	17
SEP	51
OCT	41
NOV	40
DEC	48
TOTAL	541

2019	RBDs
JAN	41
FEB	23
MAR	15
APR	89
MAY	73
JUN	68
JUL	50
AUG	
SEP	
OCT	
NOV	
DEC	
TOTAL	359