

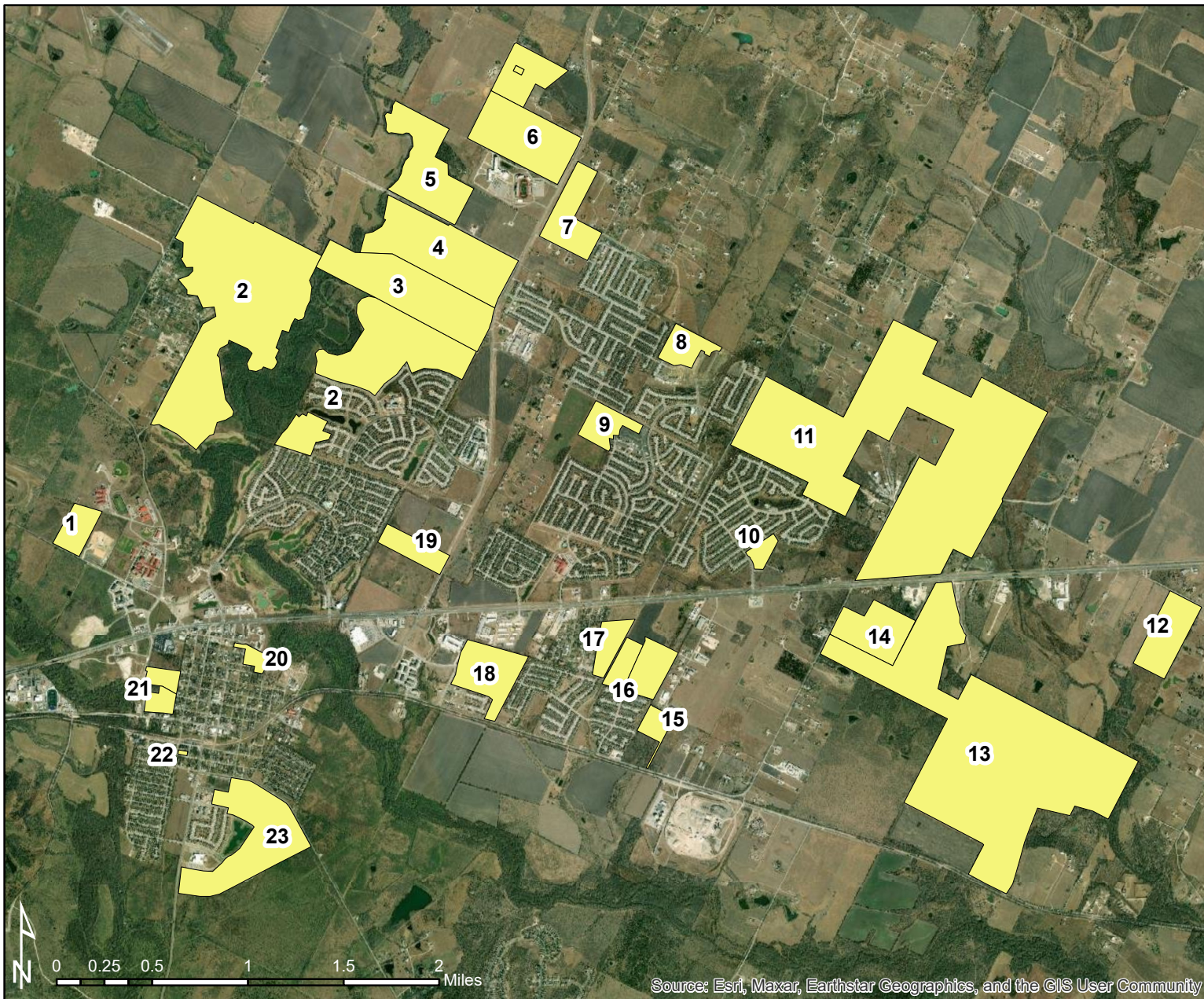
Source: Esri, Maxar, Earthstar Geographics, and the GIS User Community



## *In-Progress and Planned Developments*

- Residential
- Industrial
- Educational
- Commercial





1. Hill Lane Apartments: 350 MF Units
2. Shadowglen Phases  
2 & 3: 1,500 SF Units (3,000 total)
3. Okra Subdivision: 325 SF Units
4. Monarch Ranch: 400 SF Units
5. New Haven: 272 SF Units
6. Mustang Valley: 380 SF Units
7. Palomino: 234 Two-Family Units
8. Presidential Heights Phase 6:  
126 SF Units (600 total)
9. Presidential Meadows Phases 17  
& 18: 170 SF Units (1,600 total)
10. Presidential Glen Townhomes:  
90 TH Units
11. Manor Heights (Carillon): 1,500 SF  
and Townhome Units
12. Voelker Ln PUD: 811 MF & TH Units
13. Manor Springs: 3,900 SF,  
TH, MF Units
14. Amavi Townhomes: 335 TH Units
15. Old Hwy 20 Townhomes: 130  
TH Units
16. Ginsel Tract: 300-360  
TH Units, 450-500 MF Units
17. Landmark Multifamily: 600 MF Units
18. Village at Manor Commons:  
375 SF Units
19. View at Manor Apartments:  
600 MF Units
20. Downtown Townhomes: 100  
TH Units
21. Manor Apartments: 268 MF Units  
DB&B Apartments: 200 MF Units
22. Manor Town Apts Ph. 2: 20 MF Units
23. Lagos Manor: 500 SF Units



## ***Residential In-Progress and Planned Developments***

Residential





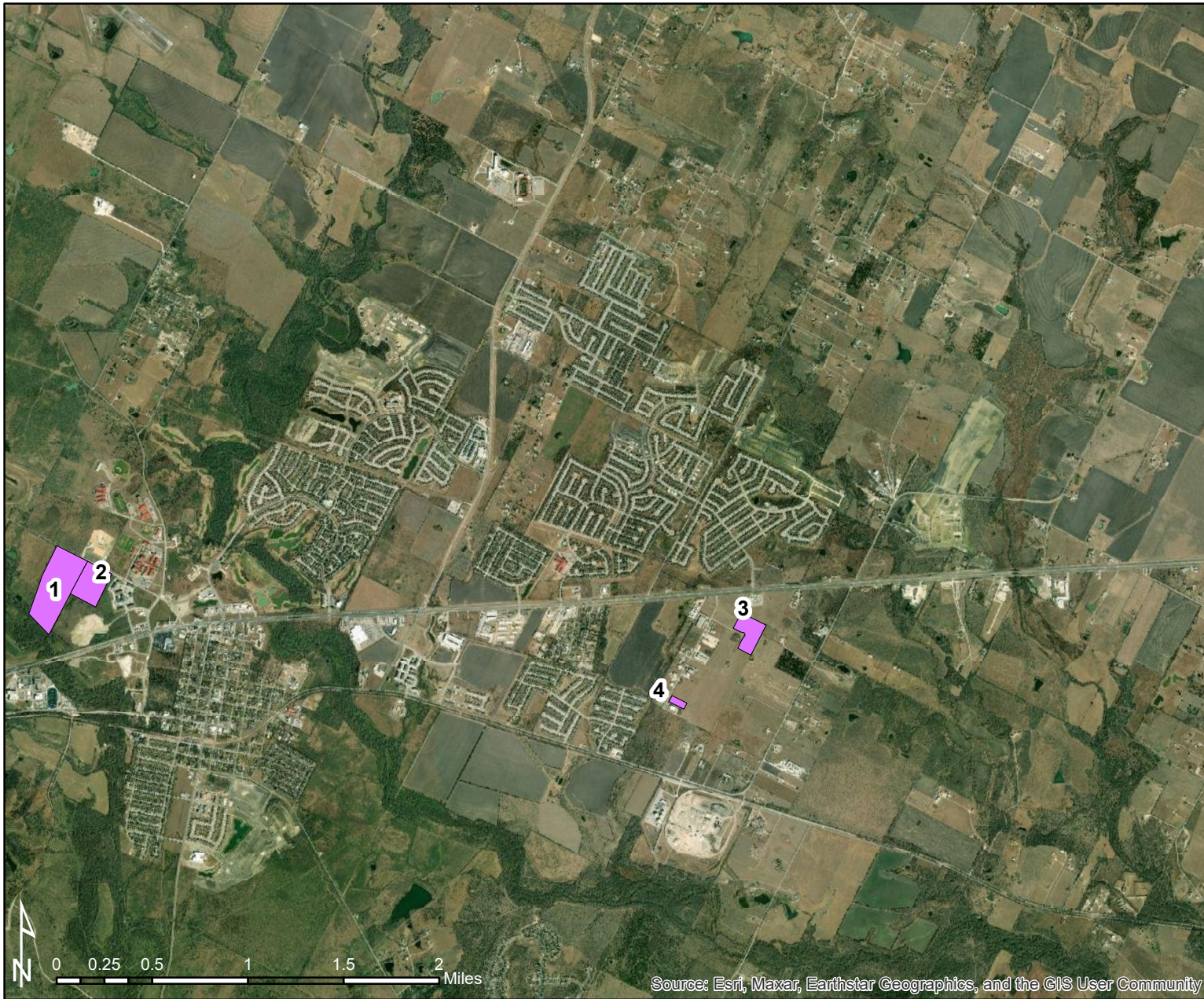
1. Las Entradas North and South
2. Hotels - 96 room Towneplace Suites and 100 room Hampton Inn
3. 709 N. Lexington Restaurant
4. New Independent Bank and Manor Village Commercial
5. Manor Crossing Shopping Center
6. La Mexicana Market, North Forest Office, Holiday Inn Express, Vet Clinic, Sherwin Williams, Bank of America, Valvoline
7. Gas Station and Flex Commercial Space
8. MinMax Travel Center
9. Presidential Glen Storage Units
10. Gas Station
11. Ginsel Tract Commercial
12. 109 N. Lexington Mixed-Use  
101-107 W. Boyce Mixed-Use
13. The Lex Commercial Flex



## *Commercial In-Progress and Planned Developments*

 Commercial





1. Whole Foods Cold Storage  
Dist. - 136,000 sf and  
196,000 sf Spec Industrial
2. Transpak - 158,000 sf &  
136,000 sf
3. Lone Star Electric - 73,000 sf  
& 53,000 sf
4. Glassnow - 21,000 sf



## *Industrial In-Progress and Planned Developments*

 Industrial






1. New Tech HS/MS Indoor Practice Facility
2. K-8 District Campus (900-1,100 Students)
3. Compass Rose Charter School (1,200 students upon Phase 3)
4. Senior HS Early College, Sports Complex, Indoor Practice Facility



## ***Educational In-Progress and Planned Developments***

 Educational